



CLIMATE MEETS SCALE

Building the Infrastructure of
a Regenerative Future

omtse.com

Disclaimer


This presentation is being furnished by Omtse Ventures, Inc. (the "Company") for informational purposes only, and is not an offer to sell, or the solicitation of an offer to buy, any securities of the Company or any other entity.

All information included in this presentation, and any other information furnished in connection therewith, is confidential and proprietary in nature, and may not be copied, reproduced or disclosed to any third party or used for any purpose other than your evaluation of a possible consensual transaction with the Company. Your acceptance of this presentation constitutes your agreement to comply with the foregoing confidentiality obligations.

This presentation does not purport to be all-inclusive or to contain all information that a prospective investor may desire in investigating the Company or any possible transaction involving the Company or any other entity. In all cases, interested parties should conduct their own independent investigation and analysis of any potential transaction. This presentation is not to be construed as investment, tax or legal advice.

Any projected financial forecasts or other forward-looking statements as to performance included in this presentation are presented for illustrative purposes only and are based upon certain beliefs, assumptions and expectations, taking into account currently available information, and speak only as of the date of this presentation. These beliefs, assumptions and expectations can change as a result of many possible events or factors, not all of which are known to or within the control of the Company. If a change occurs, actual results may vary materially from those expressed in any such forward looking statements. The Company expressly disclaims any obligation or undertaking to disseminate any updates or revisions to any forward-looking statement contained herein to reflect any change in expectations with regard to the statements or any change in events, conditions or circumstances on which any such statement is based.

The Company makes no representation or warranty, express or implied, as to the accuracy or completeness of any information included herein. Only those particular representations and warranties, if any, which may be made to a party in a definitive written agreement regarding a transaction involving the Company or any other person or entity, when, as and if executed, and subject to such limitations and restrictions as may be specified therein, will have any legal effect.

A man wearing a cap and a t-shirt is seen from behind, carrying a coconut. He is walking through a lush palm grove. The scene is bathed in the warm, golden light of late afternoon or early morning, with long shadows cast across the ground. The text 'THE LAND IS STILL RICH; THE FARMERS ARE STILL POOR' is overlaid in large, white, sans-serif font, with the word 'POOR' being significantly larger than the others.

THE LAND IS STILL RICH; THE FARMERS ARE STILL POOR

Nearly two-thirds of the 3 million coconut farm workers live below the poverty line. Many earn less than \$2 a day —despite working land that feeds global markets.

THE FUTURE WAS TRADED FOR SURVIVAL BOTH WERE LOST



Nearly half the trees are over 60 years old and "senile". Delivering a third their normal yield, break easily, and drain the soil.

Replanting stopped. Typhoons didn't. 20+ storms a year wipe out what's left. And while billions in climate finance flow, almost none reaches the ground

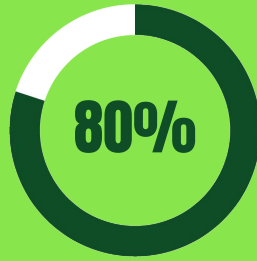


340M

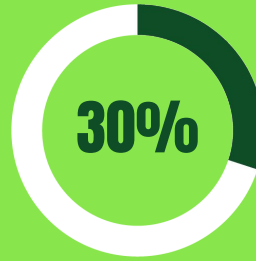
Coconut trees in the Philippines



Trees considered senile



Soil in the Philippines that is considered deteriorated



Typical yield from the Average Tree



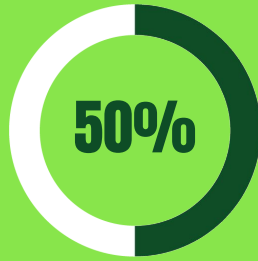
₱60/day

Net Daily Income of a Coconut Farmer. 25% below poverty

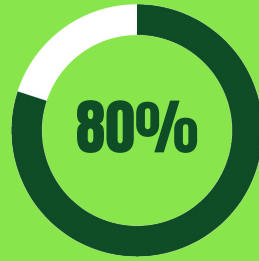


340M

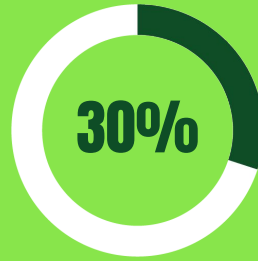
Coconut trees in the Philippines



Trees considered senile



Soil in the Philippines that is considered deteriorated



Typical yield from the Average Tree



₱60/day

Net Daily Income of a Coconut Farmer. 25% below poverty



\$15B

Global Coconut Market



Expected Growth Rate of the Coconut Industry

THIS IS THE

MOMENT

Global climate capital is shifting toward high-integrity carbon markets and large-scale adaptation projects

Climate markets are aligning: Article 6.4 frameworks, buyer demand for traceable impact, and maturing digital MRV systems converge now.

IMPACT



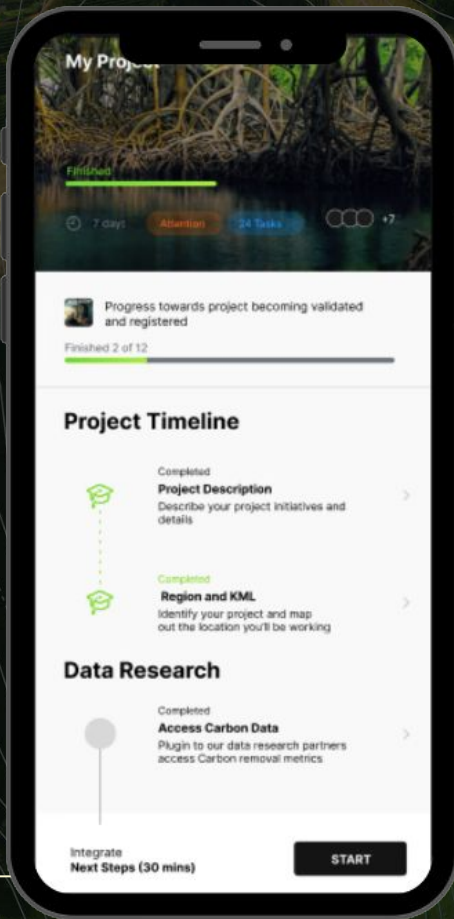
IS A MEASURED RETURN

It isn't a byproduct—or a story we tell after the fact.

Impact is a core performance indicator.
Tracked. Verified. Built into the system from day one.

Every Tree. Every Farmer. Every Hectare

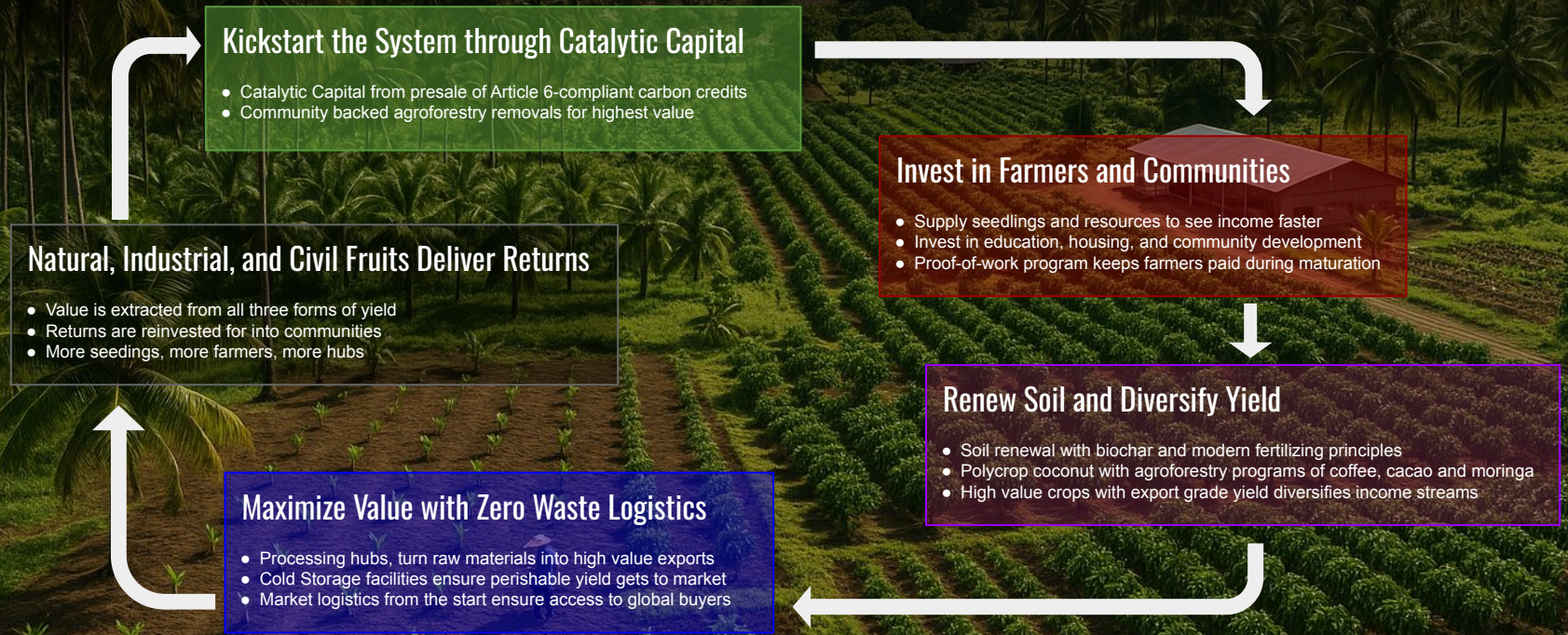
When impact is measured—and valued alongside profit—
systems don't just grow. **They last.**
Because value only compounds when the people creating it share in it.



EARTH SAMA

A major component in the success of this project is verification and optimization of the plants. We have developed an application called *Earth Sama* that validates the location and life of the tree through picture verification, taken from the farmer. This is stored on blockchain and available as security for the carbon credit in the ever growing need for verification.

The Omtse System Flywheel: Agriculture to Climate Infrastructure



A regenerative system where every turn compounds impact, income, and returns.



A Champion for the Philippines

Raised on his grandfather's farm before moving to the U.S., Apl's story is rooted in the land. Farming taught him resilience, and his global success has never pulled him away from giving back to his people.

A History of Giving Back

Through the Apl.de.Ap Foundation, he has built schools, funded scholarships, and supported community health and youth empowerment across the Philippines. His philanthropic credibility creates deep local trust.

A Platform with Global Reach

As a founding member of the Black Eyed Peas and a cultural ambassador, Apl brings unmatched visibility. His platform bridges communities—drawing attention from global markets while reinforcing national pride at home.

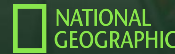
Impact for Investors

- Unlocks trust and access in-country with government, farmers, and communities
- Elevates visibility of the system on the global stage, creating outsized brand value
- Positions the Philippines as a climate and agricultural leader, with Apl as the trusted face of the movement

Apl isn't just an ambassador – he's a system's unlock

APL.DE.AP

The New York Times



The Guardian



Thank you



Get in touch

Derek Ruth

derek@omtse.com

+1 (323) 896 1462

STATEMENT OF CONFIDENTIALITY

OMTSE Ventures © 2025. All rights reserved. This document contains confidential information of OMTSE Ventures. Please do not share with other parties without a written consent from OMTSE Ventures.

omtse.com